




power over pests

 **Agropharm Ltd**
power over pests

Buckingham House Church Road Penn High Wycombe HP10 8LN
Telephone: 01494 816575 Fax: 01494 816578

 **Agropharm Ltd**

Acknowledgments:
Thanks to Clive Boase of The Pest Management
Consultancy for brochure photographs.

Every effort has been made to ensure the content of
this publication is correct at the time of going to press
(June 2002). Agropharm reserve the right to change
product specifications as new product introductions
and improvements are made.

Designed and produced by Etheo Press Ltd High Wycombe Buckinghamshire

The Natural Pyrethrum Story

Our pyrethrum manufacturing plant is literally that...a growing, living natural plant! The daisy like flowers of *Chrysanthemum cinerariaefolium* have been known to have powerful insecticidal powers for nearly 200 years. Grown mainly in Kenya, Tanzania and Australia the flower heads are collected and powdered in preparation for extraction of the natural active component pyrethrum. Agropharm then ensures that chemicals known as taraxasterols, which

are skin irritants, are removed using a sophisticated purification process to ensure that you are provided with a safe and super effective product.

The natural story continues as Agropharm then creates advanced water based nano emulsion formulations that offer professionals a natural and effective solution to many insect pest problems.

So that's why we say "Power over Pests" ...naturally.



 Agropharm Ltd



Pyblast

3% Natural Pyrethrins

Natural power to protect your premises



The Synthetic Story

We at Agropharm appreciate that pest control professionals need a combination of quick knockdown and long lasting insect control to prevent costly call backs. Whilst natural pyrethrum has the quick knockdown it doesn't offer any

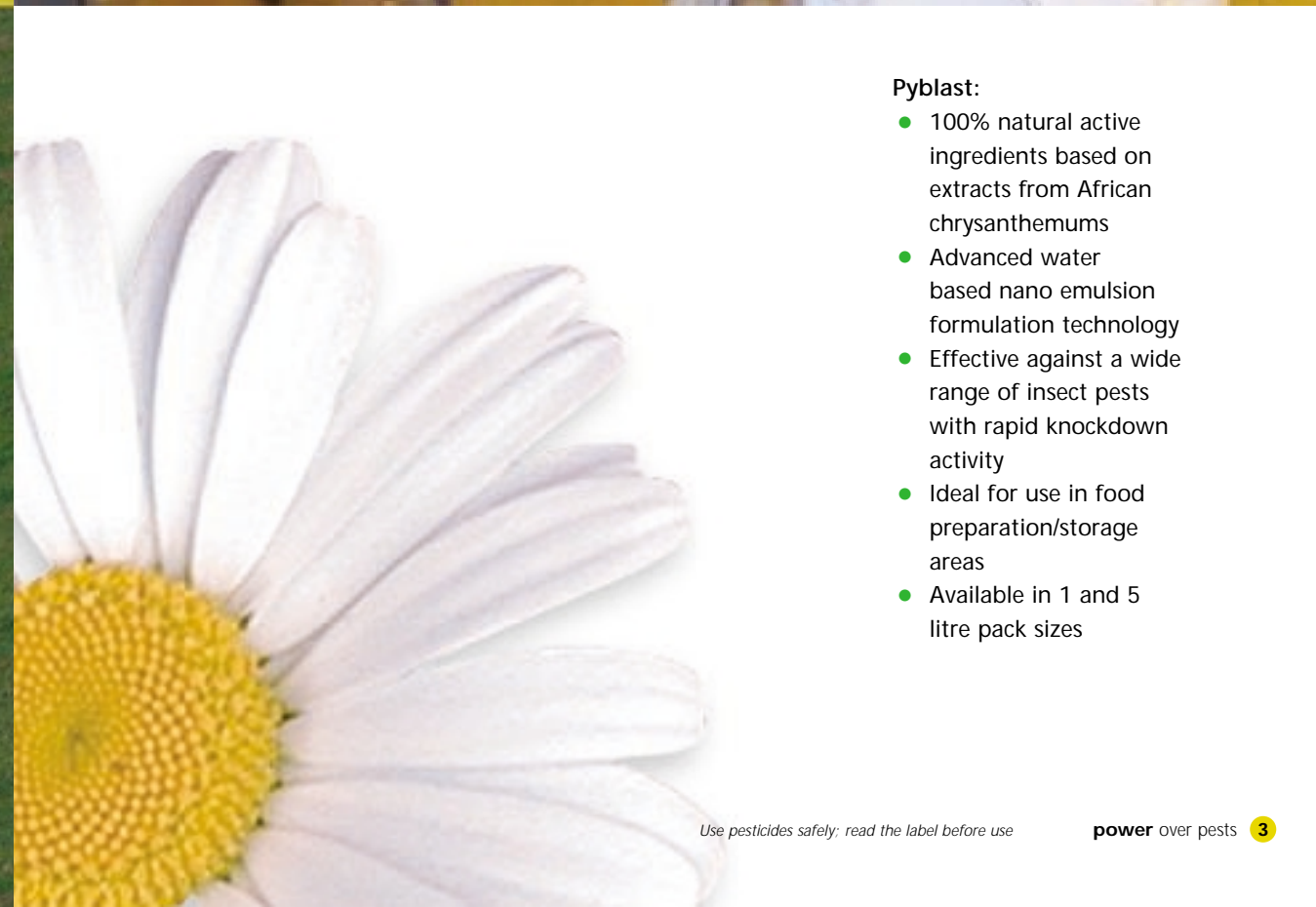
significant residual effect. We understand your needs and consequently have developed insecticides that offer residual control, safety to the operator and to the environment.

Our synthetic, environmentally responsible product range combines relatively quick knock-down and residual power. This varies from the relatively short residual activity of Patriot P applied as a space spray to the long lasting residual effect of Agrodelta applied as a surface spray. Agropharm understands the sensitivity of the UK market and to

meet this need we have developed advanced aqueous formulations free from organic solvents which means no staining (on materials tested) and no smell.

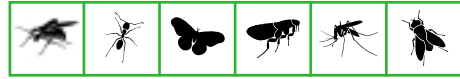
So we at Agropharm know what professionals, pest control companies and the environment need. We believe our advanced environmentally responsible range is designed to meet your needs and help you meet the challenges of the future.

Happy spraying.



Pyblast:

- 100% natural active ingredients based on extracts from African chrysanthemums
- Advanced water based nano emulsion formulation technology
- Effective against a wide range of insect pests with rapid knockdown activity
- Ideal for use in food preparation/storage areas
- Available in 1 and 5 litre pack sizes



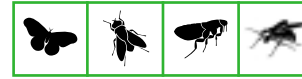
PreVent

1% Natural Pyrethrins

The natural power of PreVent to protect you.



- 100% natural active ingredients based on extracts from African chrysanthemums
- Dual purpose: insecticide and repellent activity
- Can be applied direct to the skin as a repellent
- Contains 400 doses
- Pocket size convenience



Pythrin 33

0.38% Pyrethrins



ForteFog Aerosol

0.25% Pyrethrins



Agrothrin

0.11% Pyrethrins



The natural power to protect your premises

Pythrin 33

- 100% natural active ingredients based on extracts from African chrysanthemums
- Simple ready to use formulation
- Effective against a wide range of insect pests
- The professional choice for indoor and outdoor misting and thermal fogging in warehouses and stored product areas
- Ready to use

ForteFog Aerosol

- 100% natural active ingredients based on extracts from African chrysanthemums

- Water based aerosol with no solvent smell
- Rapid knockdown activity against a wide range of pests
- Ideal for use in the home and food preparation areas

Agrothrin

- 100% natural active ingredients based on extracts from African chrysanthemums
- Convenient dusting pack for easy use
- Effective against a wide range of insect pests
- Long lasting protection for your premises





Agrodelta 2.5% NE

2.5% deltamethrin

The power that provides lasting control



Agrocypa 10% NE

10% cypermethrin



Fortefog P Fumer

13.5% permethrin



Patriot P & C

P = 0.2% permethrin
C = 0.1% cypermethrin



SYNTHETICS

SYNTHETICS



Flea

- Deltamethrin concentrate, for professional use only
- Powerful residual action for lasting control
- Advanced aqueous based nano emulsion formulation technology
- Effective against a wide range of insect pests
- Convenient squeeze and pour packs

The power and flexibility of the range

Agrocypa

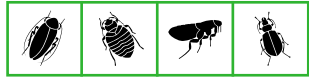
- Cypermethrin concentrate for professional use
- Strong residual action enhanced by aqueous nano emulsion formulation technology
- Effective against a wide range of insects
- No staining or smell (when dry)

Fortefog P Fumer

- Permethrin based smoke generator for professional use
- Simple, fast and complete
- Simple to use, no smell or visible deposit after treatment
- Effective against a wide range of flying and crawling insects

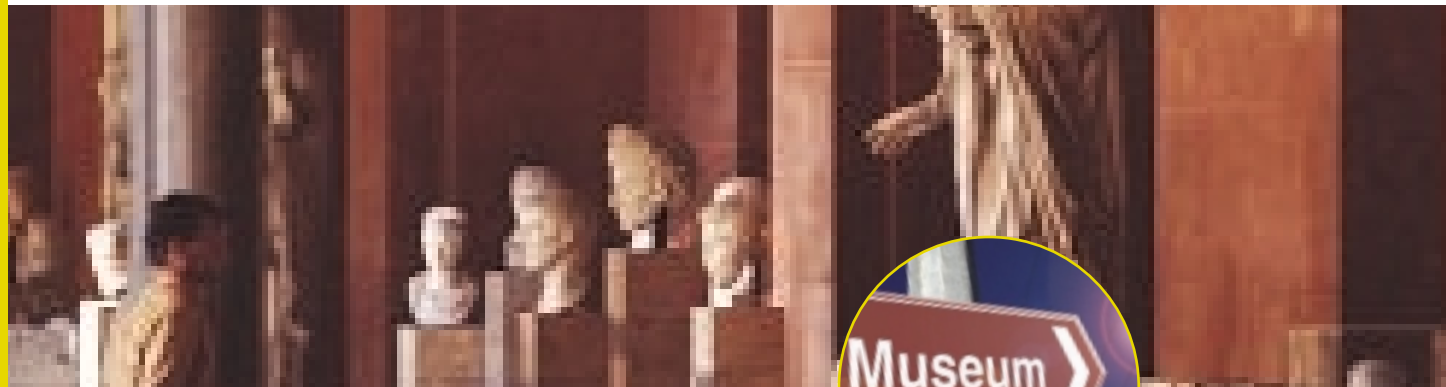
Patriot P & C

- Ready to use with amateur use approval
- Residual action enhanced with aqueous nano emulsion formulation technology
- Effective against a wide range of insects
- No staining or smell (when dry)



Agrodust

Insect killing power without any active ingredients



Desiccant dust

This product is particularly useful for use in enclosed areas where the use of an insecticide spray is not possible or desirable. The desiccant dust sticks to the insects waxy cuticle which is then absorbed leading to insect dehydration.

Agrodust contains no active ingredient and is therefore exempt from control under the Control of Pesticides Regulations 1986 and the Biocide Ordinance.

Effective against cockroaches, bedbugs, fleas and many other insects.



Value added services

To complement our range of insecticides we would also like to offer a variety of services which we believe should be offered on a free of charge basis.



Insect ID

When you spend more than £500 per month with Agropharm we will identify insects free of charge. We will respond in writing with the specimens name and means of control if necessary. For users who spend under £500 there will be a minimal charge of £25 + VAT.



Waste Disposal

We will accept packaging supplied by us at our manufacturing plant in Telford, Shropshire. All we ask for is a fax confirming when you would like to visit and we will take care of the rest. Agropharm will endeavour to re-use as much packaging as possible as part of our environmentally responsible programme.



Technical Assistance

Should you require help with any of our products you can contact us direct for advice. We will also endeavour to help with surveys and other assessments to reduce the possibility of callbacks on pests such as bedbugs or cockroaches.

Telephone:
01494 816575



Seminars/Training Days

Tailored courses will be available in the future, subject matter will vary according to your demands. Please contact us to air your comments and views on what you feel useful to you and your colleagues. Details will be released at least two months before the seminar date.



Visit our website

www.agropharm.co.uk

Orders can be made direct from the site together with the latest price information.

Ordering Information

Agropharm Direct

Agropharm delivers all its products direct to you from our factory. Ordering is simple by:

Telephone: 01952 740333

Fax: 01952 740207

email: sales@agropharm.co.uk

A confirmation of the order and delivery date will be sent to you with advice on delivery date.

BEDBUG *(Cimex lectularius)*



A reddish brown colour, purple after feeding, invariably exposed parts of the human body are its prime target. Bedbugs are normally 5-7mm long with clawed feet that enable them to climb rough surfaces. They frequently hide during the day, in heavy infestations daylight sightings are possible. Normally found in or around a bedroom, they hide behind wallpaper, pictures, bed frames, even in telephone handsets and televisions. Thorough treatment is essential. A residual surface spray, dust and ULV combined treatment is very effective. Traditionally associated with poor hygiene, movement of second hand furniture (antiques) and our ability to travel are now becoming significant factors in the spread of bedbugs.



COCKROACHES



German Cockroach (*Blattella germanica*)
Adults normally reach 10-15mm in length and are yellow/brown with two longitudinal dark marks on the pronotum. Wings cover the whole length of back. They hide during the day and normally stay in a localised area, however, when overcrowding becomes a problem they will move on in small groups. They are capable of climbing smooth and rough surfaces. Invariably found in kitchens & bathrooms, *germanica* carry their egg cases until nymphs are nearly ready to hatch, they are then dropped and the nymphs normally hatch within 24hrs.
Oriental Cockroach (*Blatta orientalis*)
Has different habits to *germanica* but the same control methods can be used, typically gel baits used in conjunction with residual surface sprays and dusts.



WASPS

Common Wasp (*Vespa vulgaris*)



A typical worker can reach lengths of 16-18 mm and is yellow/black in appearance. Widely regarded as a nuisance with a potent sting. They feed on insect larvae, meat and fruit. They are beneficial insects but can cause damage to wooden structures in gathering wood to construct nests. Wasp control can be established by several techniques including surface sprays (where possible), aerosols, powders and smoke generators. Insecticide should be applied when the nest is at its quietest and precautions should be taken against personal attack from agitated wasps.



PRIMARY FOOD PESTS - MOTHS



Indian Meal Moth (*Plodia interpunctella*)
10-15mm wingspan, pale yellow/bronze colour in appearance. Significant problem in stored foods, especially dried fruits and nuts. Larvae cause most problems and can chew through packaging binding food stuffs together with silk (webbing). Comprehensive monitoring is important, pheromone traps are ideal. Good hygiene is of particular importance, gaps should be left between pallets when storing for visual inspection and ventilation, this will also allow for insecticide treatments.



Mill Moth (*Ephestia kuehniella*)
20-25mm wingspan. Larvae are whitish with black speckles. Probably the main pest in flour mills but also found in bakeries and animal feed plants. Webbing blockages can cause significant problems in machines. Comprehensive monitoring with pheromone traps is important. Good hygiene practices and insecticide treatments should be used as well.



Tropical Warehouse Moth (*Ephestia cautella*)
10-18mm wingspan. Frequently found with imported cargos, infestations have also been reported in cereals and chocolate manufacturing plants. Monitoring is important using pheromone traps. Webbing is a problem, causing damage to infested product. Good hygiene practice is again very important. Storage of products should allow easy inspection and insecticide application.



FLIES

Common Housefly (*Musca domestica*)



Normally around 6-8mm long and have 4 dark stripes along the thorax. Associated diseases include typhoid and dysentery. Fly spots, which occur when the insect feeds or defecates can result in finished produce being rejected. They have an erratic flight pattern and distinctive wing veins. 500-900 eggs can be laid in an adult life. Hygiene is of great importance in control, insecticides can also be used with proofing & EFK's.



FLEAS

Cat (*Ctenocephalides felis*)
Dog (*Ctenocephalides canis*)



Both the cat and dog fleas are approximately 2.5mm long and are brown in colour. Cat fleas are the main species which cause infestations. Carpets and central heating are significant factors leading to increases in flea populations as the larvae are offered an undisturbed warm environment. Social stigma and bites are an obvious problem. Hygiene is important and regular cleaning of pet bedding should be carried out. Insecticides can be used effectively to offer long term protection. Pets must be treated with a product registered for that purpose.



GRAIN WEEVIL

(*Sitophilus granarius*)



3-4mm long, dark brown. A serious pest in grain and other hard cereal products. Larvae and adults will feed on the grain. Damage is easy to identify by exit holes in the grain made by emerging adults. White tainting of the product and heating of grain can lead to germination and mould. Temperatures can reach a point where the insects will die. Traps should be used to monitor infestation and good hygiene methods are essential. Insecticides should be used to treat harbourage points, cracks and crevices etc.



CONFUSED FLOUR BEETLE

(*Tribolium confusum*)



2-4mm long, reddish brown in colour. Severe pests in flour mills and bakeries. Also found in grain and nuts. In heavy infestations they will taint foods and cause flour to turn grey and increase the likelihood of mould growth. Monitor traps are essential, look for trails in dust. They will normally hide from light and insecticide treatment can be made around machines and on the structure of the building. Hygiene is important and the sealing of cracks and crevices should be adhered to. Birds nests should be removed, infested stock should be destroyed or fumigated.

